

PK401

## Ladies' zipped hoodie

- High quality jacket with a contemporary cut.
- Hood lining in the same material as the jacket.
- LSI treatment (Low Shrinkage Interlock) guaranteeing garment will not shrink as much.

70% cotton / 26% polyester / 4% elastane. Combed cotton. Interlock fabric. LSI treatment (Low Shrinkage Interlock). Two-panel hood, lined in the same fabric as the rest of the jacket, no drawstring. Overstitching at the neck. Taped neck inside the neckline. Matching metal and nylon zip with taped neck inside. Raglan sleeves. 1x1 rib. 2 pockets in the yoke seam. No brand label, only size tag for easy decoration access.



XS - S - M - L - XL - XXL



320 g/m<sup>2</sup>

**No LaBeL** LSI

### More information

#### Logistic



5



20



BD - Bangladesh

#### Customs code



61102099



Black



Deep  
Navy

#### Washing instructions



### Also available in version



PK400



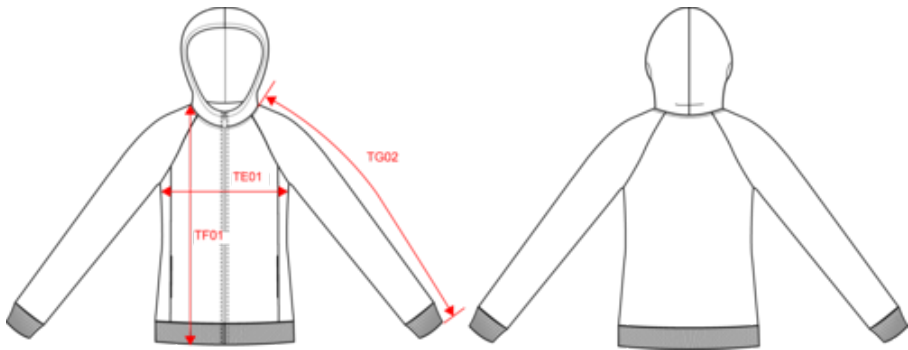
KARIBAN

PREMIUM

PK401

Ladies' zipped hoodie

Dimensions (cm)



Measurements in cm	XS	S	M	L	XL	XXL
TE01 - 1/2 chest width at 1.5cm below armhole	45.00	48.00	51.00	54.00	57.00	60.00
TF01 - Total height from HSP	61.00	63.00	65.00	67.00	69.00	71.00
TG04 - Raglan long sleeve length	69.00	70.75	72.50	74.25	76.00	77.75

KARIBAN

PREMIUM

PK401

Ladies' zipped hoodie

Colours information

Black

RVB : 35,35,37

Pantone C : Black

Pantone TCX : 19-4004TCX

Deep Navy

RVB : 34,35,47

Pantone C : 532C

Pantone TCX : 19-3924TCX

Logistic

520

Sizes	Width (cm)	Height (cm)	Length (cm)	Net weight (kg)	Gross weight (kg)	Pieces/Box	Pieces/Bundle
XS	40.00	26.00	60.00	10.50000	11.90000	20	5
S	40.00	26.00	60.00	11.40000	12.80000	20	5
M	40.00	32.00	60.00	12.20000	13.60000	20	5
L	40.00	32.00	60.00	13.00000	14.40000	20	5
XL	40.00	34.00	60.00	13.80000	15.20000	20	5
XXL	40.00	34.00	60.00	15.10000	16.50000	20	5